

■ **U.L. COMPLIANT**

Stainless steel panels are manufactured to meet U.L. 10B

■ **ULTIMATE DURABILITY**

16 ga., 304 #4 stainless steel panel will not fade or corrode, even when exposed to chemical cleansing agents. Exclusive all stainless steel track and trolley assemblies are enclosed in a stainless steel sloped shroud for less wear, exceptional performance and streamlined appearance.

■ **INNOVATIVE DESIGN**

Exclusive all-stainless steel (no aluminum or other soft metals) heavy-duty rail and trolley assembly. 16 ga. stainless sid frames and floor hardware. Ideal for cart and transporter traffic. Heavy-duty stainless steel panel, internal steel frame and external stainless steel edge capping. High efficiency, 1/4 h.p. electromechanical operator, heavy-duty nylon roller wheels, and a Kevlar reinforced drive belt, ensures efficient and continuous operation, minimizing downtime and increasing productivity.

■ **TIGHTEST SEAL**

Continuous three-sided non-marking vinyl gasket, and bottom sweep gasket ensures the tightest seal. Floor hardware maintains door position under positive and negative pressures without compromising seal. Totally adjustable floor and panel hardware.

■ **SUPERIOR PERFORMANCE**

Time tested, the Marathon fire doors have proven to be the benchmark for the strictest clean environment production areas worldwide. Over 10,000 door systems installed globally reflects our experience and customer satisfaction.

■ **UNMATCHED QUALIFICATIONS**

With over 45 years of combined experience, our professional sales consulting team will ensure your mission-critical requirements, while maintaining our uncompromising dedication to quality and value added service.

MODEL 245/255

Single Sliding Stainless Steel U.L. Rated Fire Door System (up to 90 Minute "B" Label)

MODEL 245 MANUAL | MODEL 255 POWER



Innovative Design. Superior Performance. Exceptional Value.

MARATHON HIGH PERFORMANCE DOORS, DESIGNED FOR THE LONG RUN.

Marathon's revolutionary U.L. rated stainless steel sliding fire door system is designed, engineered and precision manufactured with over 20 years of experience partnering with industrial leaders and architects across the country.

Using cutting-edge technology and exacting criteria for quality, Marathon Excel Fire Doors have surpassed market demands for quality, performance and U.L. compliance.

From its unitized high strength 1- 3/4" thick 16 gauge stainless steel panels for easy cleaning, to it's attractive, streamlined design, the Marathon Bi-Parting sliding fire door is ideal for a variety of commercial and industrial applications.

Marathon: high performance, lower operational costs, greater value.

HIGH PERFORMANCE DOORS FOR THE LONG RUN

Marathon | A Division of ASI Doors, Inc.
5848 North 95th Court | Milwaukee, WI 53225
PHONE: 414.464.6200 | FAX: 414.464.9863 | TOLL-FREE: 800.558.7068
www.marathondoors.com



MODEL 245/255

Single Sliding Stainless Steel U.L. Rated Fire Door System (up to 90 Minute "B" Label)

MODEL 245 MANUAL | MODEL 255 POWER

DESIGN AND CONSTRUCTION

DOOR SIZES

- Manual: up to 6' wide x 8' high.
- Powered: up to 8' wide x 9' high.
(Other sizes available - consult factory.)

PANEL CONSTRUCTION

- Unitized design.
- 16 gauge stainless steel continuously welded panel.
- 20 ga. stainless steel edge capping.
- Full perimeter gaskets: Non-marking gray vinyl, blade type.

OPERATION

- Powered model has 1/4 h.p. electromechanical operator with NEMA 4X fiberglass control box.
- Open - 24"/Sec.
- Close - 18"/Sec.
- (2) remote pushplates.

PERFORMANCE FEATURES

- Reversing edge for instant stop/reverse.
- (1) Send and receive reversing photoeyes.

INSULATION

- 1-3/4" thick honeycomb core.

WARRANTY

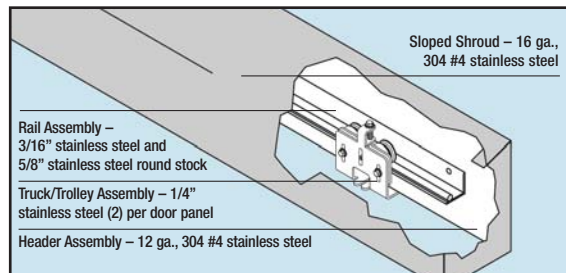
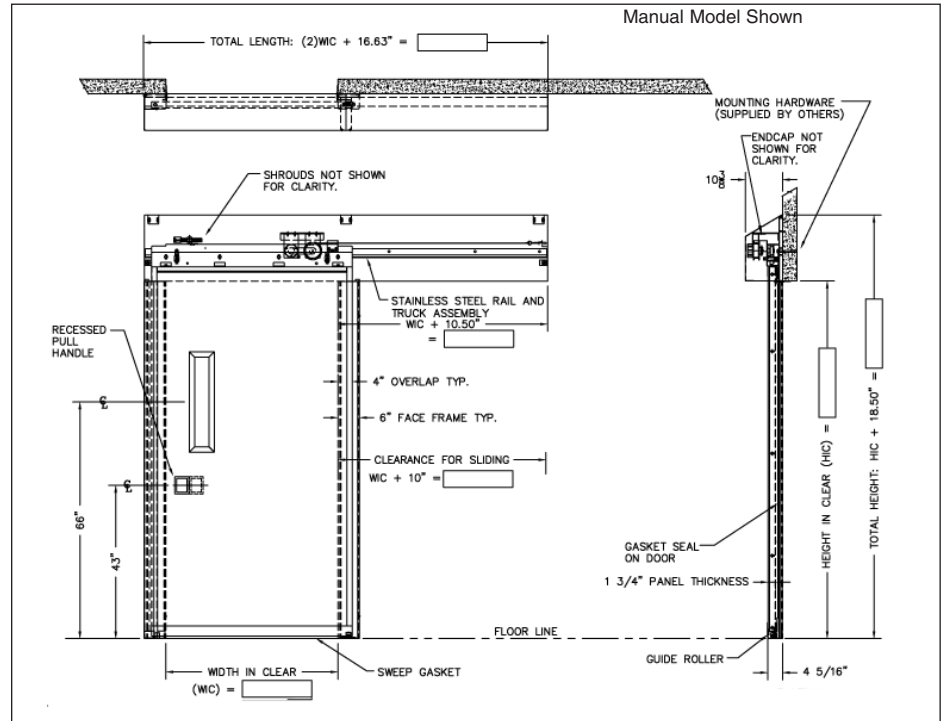
- One year limited warranty on all components.

OPTIONS

- Galvanized steel clad panels.
- Flat shroud (requires 14" headroom).
- Vision panels - wire mesh or clear fire lite.
(optional sizes).
- Available in 20 or 45 minute fire ratings.
(Larger vision panels available with these ratings).

(POWERED MODELS ONLY)

- Push plates remote mounted.
- Additional reversing photoeyes mounted in side frames.
- Touchless wall-mounted activation switch.
- Activation Devices: ■ Pull Cord ■ Photoeye ■ Radio Control ■ Loop detector ■ Motion detector ■ O/C/S push button.
- Interlock system.
- Battery back-up power supply.



STANDARD HEADER AND RAIL ASSEMBLY
For superior cleanability, durability and aesthetic appeal.



COMPLETE STAINLESS PACKAGE
Provides the ultimate in sealing and cleanability.

HIGH PERFORMANCE DOORS FOR THE LONG RUN

Marathon | A Division of ASI Doors, Inc.
5848 North 95th Court | Milwaukee, WI 53225
PHONE: 414.464.6200 | FAX: 414.464.9863 | TOLL-FREE: 800.558.7068
www.marathonddoors.com