

## LAMINATED RUBBER LOADING DOCK BUMPERS



### STANDARD SIZES

MODEL	PROJ.	HEIGHT	WIDTH	WEIGHT
AF - 410 - 11	4 1/2"	10"	11"	24
AF - 410 - 14	4 1/2"	10"	14"	28
AF - 420 - 11	4 1/2"	20"	11"	48
AF - 610 - 11	5 1/2"	10"	11"	27
AF - 610 - 14	5 1/2"	10"	14"	28
AF - 620 - 11	5 1/2"	20"	11"	54
AF - 620 - 14	5 1/2"	20"	14"	56
AF - 710 - 11	7"	10"	11"	30
AF - 910 - 14	9"	10"	14"	40
AF - 920 - 14	9"	20"	11"	85

### SPECIFICATIONS

#### DESCRIPTION

The Impact™ Series of laminated rubber bumpers by Nordock® provides effective and necessary protection from trucks at the loading dock. Dock bumpers protect against damage to the building, dock leveler, dock seal and restraint. Nordock bumpers are available in many standard size and mounting configurations as well as special sizes to suit every possible application.

#### CONSTRUCTION

Reinforced uniform rubber belting sections captured under pressure on each side with minimum 1/4" steel angles or flat. Retention bolts are 3/4" diameter zinc plated and secured with zinc plated fasteners. Anchor holes to be 3/4" diameter to accept a 5/8" wedge anchor or flats can be welded to embedded curb steel.

#### MODEL SELECTION

Example: AF-420-11

- A - Angle Steel With Anchor Holes
- F - Flat Steel
- 4 - Nominal Projection 4 1/2"
- 20 - Overall Height 20"
- 11 - Overall Width 11"

Other models available including high wear steel face, spring steel, special size and economical molded rubber style.

FF - 410 - 8	4 1/2"	10"	8"	22
FF - 420 - 8	4 1/2"	20"	8"	44
FF - 620 - 8	5 1/2"	20"	8"	50

AA - 410 - 14	4 1/2"	10"	14"	25
AA - 410 - 24	4 1/2"	10"	24"	45
AA - 410 - 36	4 1/2"	10"	36"	70
AA - 420 - 14	4 1/2"	20"	14"	50
AA - 424 - 15	4 1/2"	24"	15"	62
AA - 610 - 14	5 1/2"	10"	14"	28
AA - 610 - 24	5 1/2"	10"	24"	52
AA - 610 - 36	5 1/2"	10"	36"	80
AA - 620 - 14	5 1/2"	20"	14"	56
AA - 710 - 14	7"	10"	14"	33
AA - 910 - 14	9"	10"	14"	50

### FEATURE SUMMARY

- Superior Protection for Building, Dock Leveler, Dock Seal & Vehicle Restraint
- Uniform Flat Face Design
- Reinforced Laminated Rubber Segments
- Zinc Plated Assembly Hardware

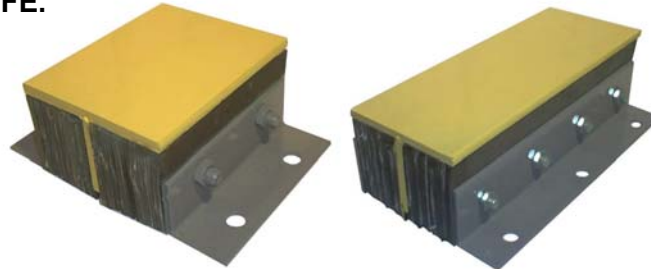
***Dedicated People ~ Superior Products***

Website: [www.nordockinc.com](http://www.nordockinc.com) ~ Email: [Sales@nordockinc.com](mailto:Sales@nordockinc.com) ~ Toll Free: 866-885-4276



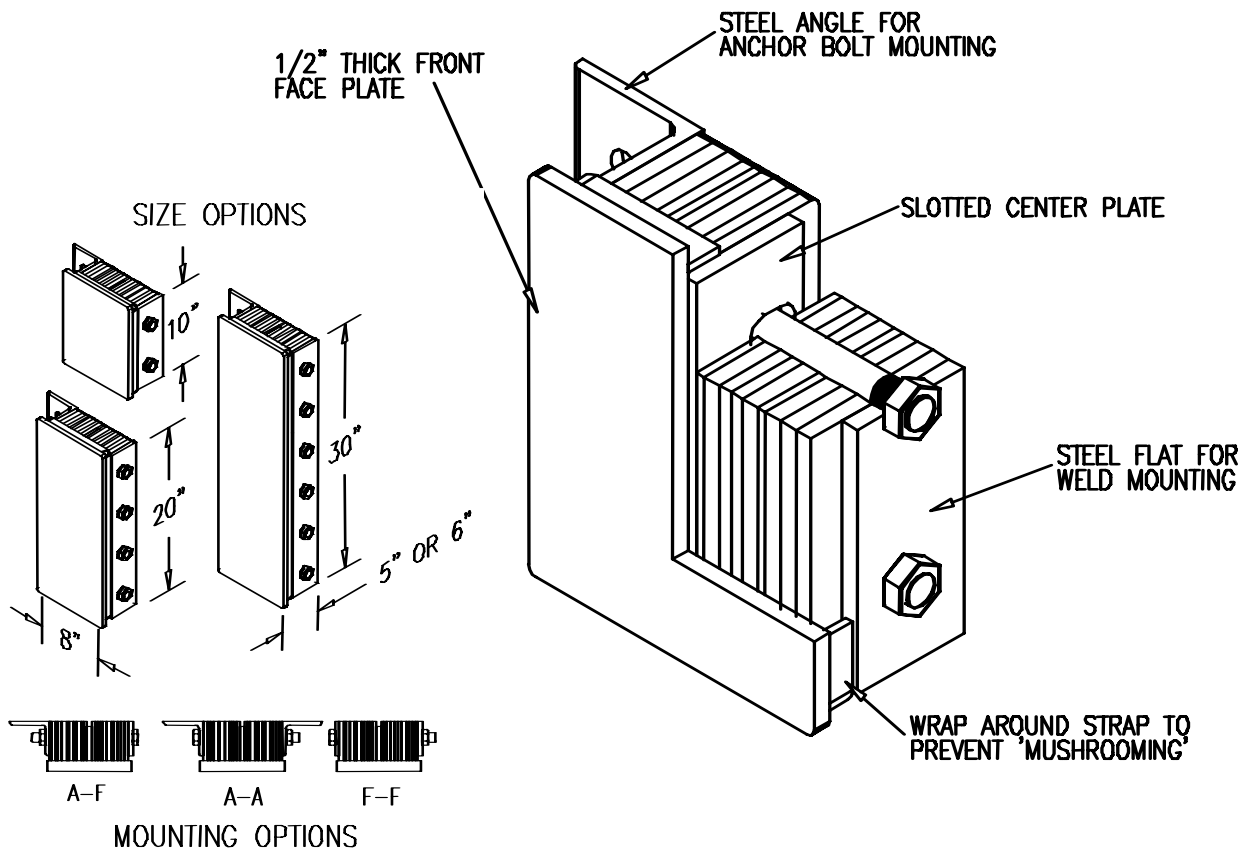
# IMPACT™ SERIES STEEL FACE DOCK BUMPER

THE ULTIMATE IN BUILDING PROTECTION AND PERFORMANCE! THE NORDOCK STEEL WRAP AROUND STYLE BUMPER WITH ITS 1/2" THICK STEEL FLOATING FRONT FACE MAXIMIZES ABRASION RESISTANCE, ABSORBS IMPACT AND PROLONGS BUMPER LIFE.



THE FLAT REINFORCED STAMPED RUBBER SECTIONS ENSURE EVEN SUPPORT TO PREVENT DENTING. THE WRAP AROUND FRONT FACE KEEPS THE RUBBER IN PLACE, ELIMINATING A POTENTIAL 'MUSHROOMING' EFFECT.

THE NORDOCK IMPACT SERIES BUMPER IS A WISE INVESTMENT FOR COMPANIES THAT INSIST ON SUPERIOR BUILDING PROTECTION.



*NORDOCK INC.*

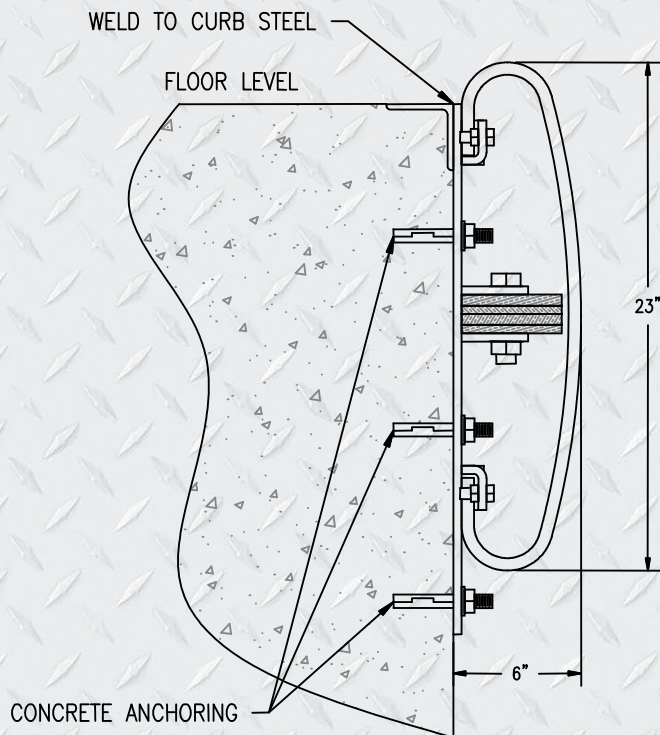
Website: [Nordockinc.com](http://Nordockinc.com) ~ Email: [Sales@Nordockinc.com](mailto:Sales@Nordockinc.com) ~ Toll free: 866-885-4276

Nordock Inc. reserves the right to make changes to specifications without notice or obligation. Nordock products are covered by various U.S. and foreign patents or pending applications.

**Introducing:  
The Best Bumper Made!**

## IMPACT™ SERIES STEEL SPRING BUMPER

- Uses 2 – 4” Steel Spring Pads That Absorb Impact
- Allows Trailers To Ride Up and Down The Face With Minimal Friction
- Laminated Rubber Section Offers Additional Support For Trailer Impact
- 9/16” Tempered Steel Springs Mounted On 3/8” Steel Back Plate
- Steel Springs Easily Removed For Installation



4" X 23", 9/16"  
TEMPERED STEEL  
SPRING PADS

LAMINATED  
RUBBER SECTION  
FOR ADDED  
PROTECTION

REMOVABLE  
HARDWARE FOR  
EASE OF  
INSTALLATION

MOUNTING HOLES FOR  
5/8" CONCRETE ANCHORS  
(Not Included)



***Dedicated People ~ Superior Products***

**Website: [www.nordockinc.com](http://www.nordockinc.com) ~ Email: [Sales@nordockinc.com](mailto:Sales@nordockinc.com) ~ Toll Free: 866-885-4276**