



Western Canada Express

Concord, ON

FEATURED PRODUCTS

3 SS701 dock shelters

ADDRESSING THE ISSUES

Western Canada Express was seeking new loading dock shelters to replace their three existing dock shelters, which were worn-out to the extent that they were falling off the wall. Due to the damaged shelters, employees experienced discomfort while loading and unloading the trailer.

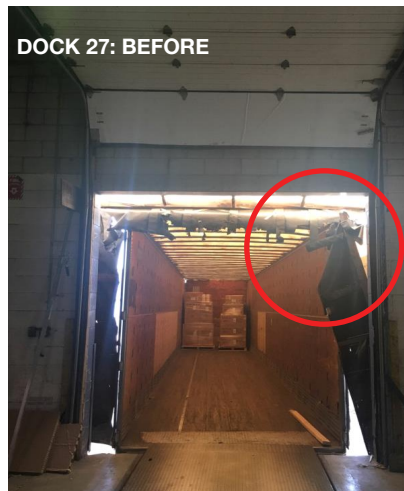
THE NDS SOLUTION

Based on Northern Dock Systems' recommendation, Western Canada Express installed three SS701 dock shelters to:

- Create a weathertight seal against inclement weather.
- Enhance employee comfort indoors by preventing cold air, rain and snow infiltration, and in turn, increasing their workplace productivity.
- Improve their energy efficiency by sealing off gaps between the trailer and the door which their existing shelters failed to do.

By replacing their existing worn-out dock shelters, Western Canada Express received a **one-time energy rebate of \$677**, and are now able to load and unload their trailers even during harsh Canadian winter weather without any infiltration.

- Operational efficiency
- Indoor comfort
- Weathertight seal
- Increased safety



**OLD LOADING DOCK SHELTERS:
WORN OUT AND FALLING APART**



**NEW LOADING DOCK SHELTERS:
WEATHERTIGHT SEAL**