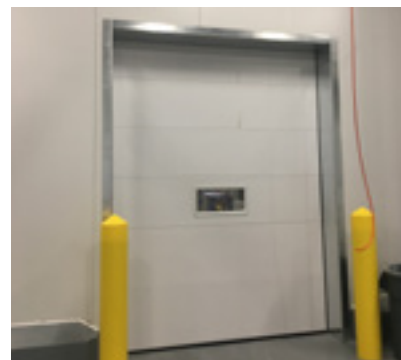


Kawartha Dairy Limited

Complete Door Solution



Address: 89 Prince St W, Bobcaygeon, Ontario

Contractor: Maple Reinders Constructors Ltd.

Equipment Provided: 12 SDI model C175 Steel Insulated Sectional Overhead Doors

Description: Northern Dock Systems Inc. Construction Division was awarded the supply and install of the Sectional Overhead Doors and Jackshaft Operators for the New Kawartha Dairy Facility. In addition to the doors, Northern Dock Systems constructed and designed a control panel to fully interlock our interior door with those other doors in the surrounding area. These Sectional Doors, paired with Northern Dock Systems exceptional service, will allow for a fully functional building for many years to come.

Architect: Tacoma Engineers

Completed: December 2017

Toll Free: 1-866-601-1758
www.northerndocksystems.com

