



Walmart Pharmacy Shutters

Fredericton, NB



PROJECT OVERVIEW

The existing shutter system at Walmart Fredericton North Supercentre's Pharmacy was damaged and not raising or lowering properly.

In addition, Walmart was seeking a new counter shutter solution that would close behind their glass partitions allowing easier access to lock and secure the Pharmacy after business hours.

Northern Dock Systems (NDS) supplied and installed 6500 series rolling steel counter shutters. The new rolling steel shutters used pull cords to manually lift the shutter and awning crank handles for extra accessibility. Manual lift/lowering simplifies the product (i.e., without the use of any electronic mechanisms) to extend the lifespan of the product and reduce maintenance costs.

NDS also recommended moving the glass partitions to the store side of the counter, allowing the new shutters to close and secure on the Pharmacy side of the glass partition. Relocating the glass partitions also allowed for Walmart employees to have easier access to the shutters and their locking mechanisms.

Employees are now able to use the new 6500 series shutters to lock the Pharmacy after business hours easily and securely.

Product safety

Easy employee access

Longer lifespan

Lower long-term maintenance costs



FEATURED PRODUCT

6500 series rolling steel counter shutters

PROCESS WORK



Old, existing shutters

- Four roller shutters mounted to bulkhead on Pharmacy interior.
- Service areas/product pass through are on left and right.
- Centre section has 14" high glass panel in front of working Pharmacists.
- Night time lockup requires all four shutters to roll down to counter height.
- Shutters are controlled by electric operators (one control switch operates all operators simultaneously.)

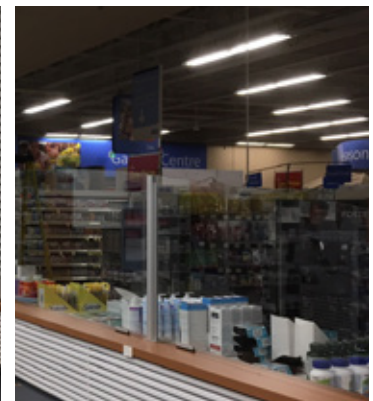


New 6500 series shutters

- Service areas are on the left and right.
- Two roller shutters mounted to bulkhead on Pharmacy interior at left and right pass through areas (manual lift/lower with pull cord.)
- Two roller shutters mounted to bulkhead in centre counter sections (manual lift/lower with cranking stick.)
- Nighttime lockup requires all shutters to roll down to counter height and lock with thumb turn locks.



CLOSED SHUTTERS



OPEN SHUTTERS