



Northern Dock Systems

Dedicated **People** | Expert **Service** | Superior **Products** | Energy-saving **Solutions**



**EQUIPMENT
CONSTRUCTION
AND DESIGN**



**NATIONAL
SERVICE**



**EMERGENCY
SERVICE**



**PREVENTIVE
MAINTENANCE
PROGRAM**



**EQUIPMENT
INSTALLATION**



**ELECTRICAL
SERVICES**



**ENERGY
SAVING
SOLUTIONS**

SERVICE | CONSULTING | SALES | CONSTRUCTION

Commercial and Industrial Doors · Dock Equipment · Springless Door Operators
HVLS Fans · Air Curtains · Seals and Shelters · Safety Equipment · Fire Doors/Shutters

www.northerndocksystems.com

1 (866) 601-1758

service@northerndocksystems.com

SOLUTIONS FOR MANUFACTURING WAREHOUSES, FOOD, PHARMA, AUTO AND RETAIL
Improve Safety, Energy Savings and Prepare for Audits or Inspections

BLUE GIANT
Authorized Dealer



**EMERGENCY
SERVICE**

24HR Emergency Service & Scheduled Repairs

- Root cause discovery
- First-time fixes
- Professionally trained technicians
- Working at heights trained
- Arrive with all owner manuals digitally
- GPS dispatched service team
- Real-time work order review
- Email updates
- Before and after pictures



Before

The bottom of an overhead sectional door was accidentally hit. The weather seal, safety edge and bottom section were damaged.



After

Repaired damaged weather seal, safety edge and bottom section. Also wiped off all fingerprints on the overhead door.



**75%
First-Time
Fix Rate**
3rd Party Verified



**24 Hour
Average
Response
Time**

Quality Control with Field Supervisors

Every technician is managed and trained by a Field Supervisor for:

- Quality control
- Training technicians
- Managing escalations
- Up keeping safety standards



Details	Content
Arrived on site and found that hose had been cut though by dock lip. Removed broken hose, ground off sharp edges on dock lip and made opening big enough for new hoses.	

Primary Incident Type	Dock Service	Specialist	
Customer Asset	Position 5 - Dock	Signed By	
Scope of Work	Leaking hose on dock 5. Assess and repair.	P.O #	Email

Execution Notes		
Details	Content	
<p>Created On: 6/23 2:16 PM</p> <p>Created By: Rafael</p>	<p>Arrived on site and found that hose had been cut through by dock lip. Removed broken hose, ground off sharp edges on dock lip and made opening big enough for new hoses.</p> 	
<p>Created On: 6/23 2:52 PM</p> <p>Created By: Rafael</p>	<p>Installed new hoses and tested dock for proper operation. Hoses aren't rubbing anymore and dock is functioning properly.</p> 	
<p>Created On: 6/23 4:21 PM</p> <p>Created By: Rafael</p>	<p>Completed job.</p> 	

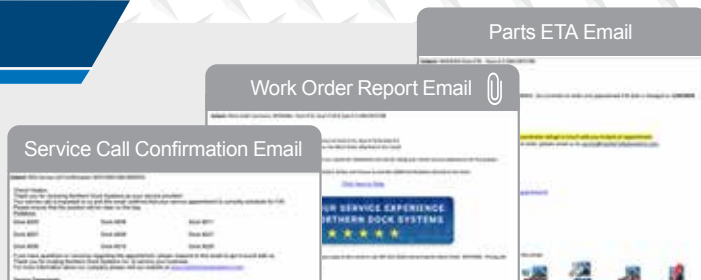
Work Order Report for Repairs

With before and after pictures

Keeping You in the Loop

Our emergency service team will keep you in the loop on the status of your call. You will receive email confirmations when we have:

- Accepted the call.
- Scheduled the call.
- Completed the job with a work order summary and pictures.
- If the job requires a highly specific part, then we will give you a parts ETA.



What Gets Measured Gets Done - KPI Tracking

We track key performance indicators (KPIs) during the entire process, from the time your phone call is picked up, to the time it takes the technician to reach your location, to completion times and to the time it takes our finance department to issue your invoice. We strongly believe what gets tracked gets done more efficiently and quickly, which decreases our customers' downtime and increases their productivity.

- Response Times
- First-Time Fix Rates
- Part Delivery Times
- Completion Times
- Invoice Times



Call Priority Codes				Aging Next Steps		Facility Status	
Active Work Orders	Priority Code	Next Step	Next Step	Next Step	Next Step	Facility Status	Facility Status
10000001	10000001	10000001	10000001	10000001	10000001	10000001	10000001
10000002	10000002	10000002	10000002	10000002	10000002	10000002	10000002
10000003	10000003	10000003	10000003	10000003	10000003	10000003	10000003
10000004	10000004	10000004	10000004	10000004	10000004	10000004	10000004
10000005	10000005	10000005	10000005	10000005	10000005	10000005	10000005
10000006	10000006	10000006	10000006	10000006	10000006	10000006	10000006
10000007	10000007	10000007	10000007	10000007	10000007	10000007	10000007
10000008	10000008	10000008	10000008	10000008	10000008	10000008	10000008
10000009	10000009	10000009	10000009	10000009	10000009	10000009	10000009
10000010	10000010	10000010	10000010	10000010	10000010	10000010	10000010
10000011	10000011	10000011	10000011	10000011	10000011	10000011	10000011
10000012	10000012	10000012	10000012	10000012	10000012	10000012	10000012
10000013	10000013	10000013	10000013	10000013	10000013	10000013	10000013
10000014	10000014	10000014	10000014	10000014	10000014	10000014	10000014
10000015	10000015	10000015	10000015	10000015	10000015	10000015	10000015
10000016	10000016	10000016	10000016	10000016	10000016	10000016	10000016
10000017	10000017	10000017	10000017	10000017	10000017	10000017	10000017
10000018	10000018	10000018	10000018	10000018	10000018	10000018	10000018
10000019	10000019	10000019	10000019	10000019	10000019	10000019	10000019
10000020	10000020	10000020	10000020	10000020	10000020	10000020	10000020

Prioritizing Calls

Every day, each department meets to discuss the status of their calls and work orders whether they are in:

- Service
- Estimating
- Parts
- Installation

Book a Service Call

1 (866) 601-1758 or service@northerndocksystems.com



Do Your Due Diligence & Improve Safety



**PREVENTIVE
MAINTENANCE
PROGRAM**

Any piece of equipment with moving parts needs to be properly maintained and serviced regularly to:

- Improve safety and prevent workplace injuries
- Decrease downtime from equipment failure
- Extend your equipment's lifespan
- Prepare for safety inspections, food audits and strict Ministry of Labour regulations
- Compliance and due diligence with government regulations and fire codes

1 360° View of Your Equipment

Get a complete view of the condition of all your industrial or commercial equipment.

2 Documented Due Diligence

Be audit-ready and do your due diligence with documented reports of our multi-point inspections.

3 Prioritize Repairs

Arrange repairs to minimize inefficiencies, decrease downtime and improve performance.

The best service call is the one you never have to make

SECTIONAL OVERHEAD DOOR AND OPERATOR INSPECTION SHEET

	GOOD	WORK	REPLACE	REPAIR
Inspect and secure lower jambs and door track, straighten if required				
Inspect sections				
Inspect and lubricate rollers				
Inspect and lubricate hinges				
Inspect bottom bracket				
Inspect and adjust slide lock				
Inspect and secure lift handle and step plate				
Inspect pull rope				
Inspect cables				
Inspect side weather seal				
Inspect top weather seal				
Inspect bottom weather seal (rubber and or brush)				

Multi-Point Inspection Sheet

Available for doors, docks, air curtains, HVLS fans and more.

Full Service from Concept to Completion

Northern Dock Systems has worked nationally to coordinate and execute hundreds of new builds and equipment installations within timelines to meet today's demand for fast, safe and efficient operations.

- Maximizing energy efficiency
- Lowering ownership costs
- Contracting services
- Receiving future facility support
- Working within your budget and schedule with fully licensed personnel
- Turnkey installations
- Canada-wide construction services



From Concept

Drawings and specifications for the construction design phase

- Loading dock pits
- New door openings
- Fencing and gates
- Steel pipe bollards



To Completion

Full turnkey solutions from professional new equipment installers

- Access control systems
- Electrical installation and assessments
- Drive approach grade renovations
- Concrete work and block wall repair



**EQUIPMENT
CONSTRUCTION
AND DESIGN**



**EQUIPMENT
INSTALLATION**



Order New Equipment

1 (866) 601-1758 or sales@northerndocksystems.com



Dock Levelers & Lifts - Safer Loading & Unloading

EXCLUSIVE
DISTRIBUTOR

BLUE GIANT
Authorized Dealer



Loading Dock Regulations

Discover your government health and safety regulations for your loading docks by scanning the QR code or visiting: www.northerndocksystems.com/provincial-safety-code-loading-dock-door/



60 Years of Experience

Blue Giant has been making and building dock levelers since 1963. They are forefront innovators for decreasing maintenance costs and improving productivity.



Hydraulic Dock Leveler

Easy operation with a push of a button. Hydraulic dock levelers can save you up to 91% of maintenance costs when compared to mechanical docks.



Mechanical Dock Leveler

Mechanical dock levelers are the economical option for small-to-moderate applications. These docks are designed to simplify the loading and unloading process.



LoMaster Dock Lift Tables

For ground-level loading and unloading where no loading dock is present. For safety, it has an anti-slip rust-proof deck.



Edge-of-Dock Leveler

Edge-of-dock levelers are ideal for loading docks with limited space. Available in mechanical and hydraulic models.



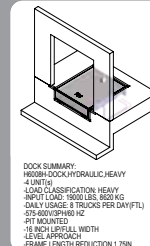
Rust-Resistant Powder Coat

The powder coat finish provides a long-lasting and rust-resistant finish and colour. It is available in blue, black, grey and yellow.



Robotic Welding

State-of-the-art robotic welding ensures structural integrity, consistent strength and uniform quality across all welds.



Quality Control

We'll work with a team of engineers to create a drawing with your quote to make sure that your dock matches your needs.

Trailer Restraints - Prevent Trailer Creep, Early Departure, Trailer Leg Collapse & Accidents

EXCLUSIVE
DISTRIBUTOR

BLUE GIANT
Authorized Dealer

Prevent serious workplace injuries and accidents with a trailer restraint or wheel chock. Keep your workers safe and prevent the truck from moving forward.



SVR303 Hydraulic Barrier Restraint

It has 35,000 lbs of restraint force. NEMA6 IPS sensor, ice breaker mode and double-acting hydraulic cylinders keep the unit operating safely and efficiently during wet, flooded and icy conditions.



ML10 Mechanical Barrier Restraint

30,000 lbs of restraining force prevents premature truck departure during loading and unloading. The unit can be left in a locked position overnight to discourage trailer theft.



TL85 Hydraulic Barrier Restraint

An economical hydraulic barrier restraint with 32,000 lbs of restraint force. The passive engagement reduces wear and tear and lowers the lifetime cost of ownership.



Interlock Chock

The chock handle contains high visibility LED lights and an integrated alarm, communicating to the operator that the Interlock Chock is engaged and secure.



HVR303 Electric Hook Restraint

A hook-style arm that uses an electronic compensation float to secure all trailers. The IP67-rated motor is submersible up to 1 m to prevent it from getting damaged in extreme weather conditions.



Blue Genius Gold Control Panels

Food and pharmaceutical safe NEMA4X (moisture and corrosion resistant) easy push-button control station. Can be integrated with your trailer restraints, doors, docks and/or dock lights.





Steel Face Dock Bumpers - Your Seals #1 Defence

Worn out or incorrect bumpers can:

- 1 Severely damage to your building's walls.
- 2 Rip off, tear or overcompress your dock seals and shelters.
- 3 Damage and warp your dock levelers and overall loading dock.

The dock bumper is the single most important piece of equipment for any loading dock area, it's the first line of defence in protecting your building and equipment from damage while the trailer backs into the loading dock.

It protects your:

- Building
- Dock seals
- Dock leveler
- Trailer restraints



Steel Face Dock Bumper

EXCLUSIVE DISTRIBUTOR

BLUE GIANT
Authorized Dealer

Dock Seals and Shelters - Sealing Up Energy Savings

Selecting the proper seal or shelter is the first step in solving your environmental, energy loss and safety concerns. Save money in reduced energy costs and increase productivity by creating a safe and comfortable working environment.



These products provide an energy-saving solution that reduces annual energy bills.



Insects



Pests



Drafts



White Light

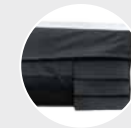


Moisture



Compression Dock Seals

Creates a foam-filled compression around a trailer's top and sides, supporting energy efficiency and climate control. Available with head pads or head curtains and a wide range of fabric types.



Rain Shroud

Economical and high performance, the Rain Shroud keeps rain water out of the loading dock area with a foam wiper blade design to create a tight seal against the top of the trailer.



Dock Shelters & HingeMaster Extreme

Provides unrestricted access to the trailer interiors while sealing off any hinge gaps. For efficient loading and unloading while keeping out rain, snow, and debris.



ArmorShield

Shield your investments with ArmorShield, a heavy-duty material designed to drastically increase the lifespan of seal and shelter units. Nearly 3x the thickness of standard 40oz. vinyl.

LED Versa Light®

Properly illuminates the entire 53' container. Suitable for food grade applications. Bendable neck withstands impact and prevents damage.



LED Versa Light illuminates an entire 53' trailer

Bollards & Guardrails

Protect your equipment, assets and workers from accidental collisions.

- Pedestrian walkway
- Flexible guardrail
- Steel guardrail
- Barrier gate
- Fixed pour-in bollard
- Surface mounted bolt-down bollard
- Rebounding bollard



Barrier Gates

Fully customized and made to withstand Canadian winters.



Activate by keypad, fob or in-ground loop

Custom arm lengths and colours for any driveway width

- Tested to perform 2 million continuous cycles.
- IP-55 rating withstands harsh Canadian climates.
- Senses and reverses when obstructed for added safety.



Door Solutions for Every Industry

EXCLUSIVE
DISTRIBUTOR

DOOR
ENGINEERING

From performance to high-speed doors that can reach speeds of up to 80" per second. Along with springless options to eliminate spring maintenance.



Polycarbonate Doors

Allows maximum light infiltration with heavy-duty polycarbonate panels.

Or add a row of these panels to steel sectional doors to let in natural light without losing the insulation value.



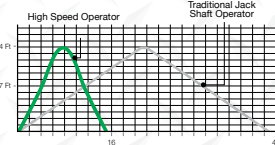
Four-Fold Doors

- Doors open in less than 7 seconds.
- Horizontal movement provides a clear line of sight.
- Full perimeter seals to keep out outside weather.
- Tested to perform over a million cycles.



High-Speed Springless Door Operators

Opens doors up to 5x faster



XP Iso-Flex Impactable Sliding Cooler Doors

- Opening speeds up to 50" or 100" per second depending if it's single or bi-parting.
- 4" thick R-17 panels.
- The only impactable door with a wall mounted guidance system and pivoting head to prevent downtime and repair costs.

Door Solutions Available for All Industries



Flexible & Impactable Overhead Dock Doors



Cold Storage High-Speed Doors



High-Speed Fabric Doors



Fire Doors and Shutters



Large Rubber Doors



Bug Screen Doors

Weather Seal



Insects



Pests



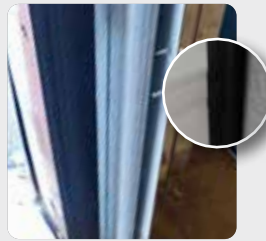
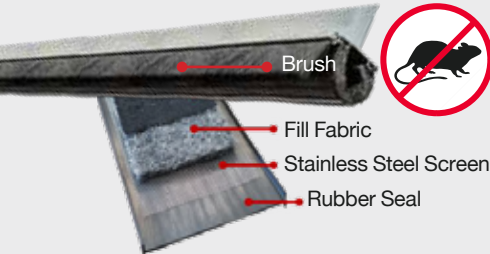
Drafts



White Light



Moisture



Be Food Audit-Ready with Rodent-Proof Weather Seal

Rodents can easily chew through a standard rubber weather seal. Protect the doors and docks using four layers of:

- Brush
- Stainless-steel mesh
- Rubber
- Stainless-steel blend

In Track Weather Seal

In jam weather seal is easily ripped off or damaged. While in track weather seal is mounts to the inside of the door frame to protect it.

Fire Door & Shutter Drop Test

According to NFPA 80, a fire door needs to be inspected and tested annually. It is the employer's responsibility to make sure that the facility's fire doors are in proper operation to be prepared in case of an emergency. Do your due diligence, book your fire door drop test with us today.



"All external windows, ventilation openings, doors, and other openings shall be effectively sealed when closed, and proofed against dust, vermin, and other pests."
– SQF Institute – Food Safety Code: Food Manufacturing, Edition 9



"Fire door assemblies shall be inspected and tested not less than annually."
– 5.2.1.4 NFPA 80 2022 Standard for Fire Doors, Copyright © 2022, National Fire Protection Association

Door Activation - Automatic Wave & Motion Sensors

Transform your facility into an automated, touchless solution.

- Doors that cannot be left opened
- Office to warehouse
- Shipping and receiving
- Entrance
- Washrooms
- Clean rooms
- Food service facilities
- Dual egress doors
- Industrial doors
- Swing doors
- Sliding doors



EXCLUSIVE
DISTRIBUTOR

MacroAir
engineers of air™

HVLS Fans - Keep Workers Cool & Warm

The gearless direct drive motor requires zero maintenance and provides whisper-quiet operation while being backed by up to a 10 year electrical and 15 year mechanical warranty depending on the model.



Improve air circulation



Increase worker productivity



Feel the cooling effect



Manage condensation



Reduce heating costs



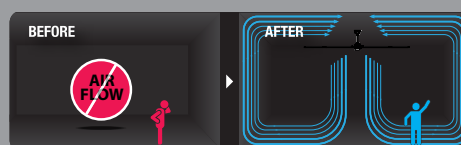
Thermal Equalization



Save 1% of natural gas used per foot of ceiling height

- Reduces energy loss by pushing rising hot air down
- Equalizes facility temperatures

Evaporative Cooling Effect



Save 6% per degree when you raise the thermostat

- Provides an evaporative cooling benefit for up to 8°F to workers



AVDX



AirVolution



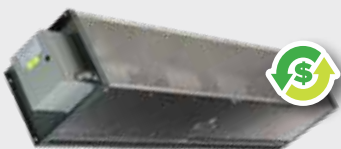
AirLegacy



AVD370

Air Curtains - Create a 90% Seal

The only way to have your door open and closed at the same time.



Insects



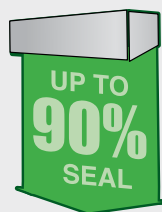
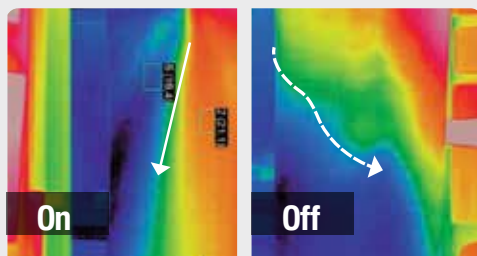
Pests



Drafts



- Creates up to a 90% seal across the entire door opening.
- Allows employees, forklifts and products to move through doorways without process delays.
- Deters dust and insects from entering facilities.
- Pulls hot air down from the ceiling further reducing heating costs and energy usage.
- Keeps out heat and humidity during summer months.
- Stops cold drafts in the winter months.
- Save 15 units of energy for every 1 unit used.



Air curtains create a barrier of air to prevent exterior elements including temperature and debris from entering open doorways.

Air Filtration - Remove Germs & Dust

Cleans the air you breathe by removing dust, sand, soot, pollen, mold, smoke and viruses. Also, it prevents dust from settling on your product and electronic equipment.



AtomikAir

- For warehouses, loading docks, auto garages and industrial spaces.
- Destatifies a space for thermal equalization to save 1% of natural gas used per foot of ceiling height.
- Cleans the air using four washable MERV 13 filters.
- Stops dust build up on your product.
- The unit size is 4' x 4' x 6'.
- One unit every 20,000 sq ft or one every 10,000 sq ft, if there is very significant air contamination.



Dust



Germs



JADE™2.0

- For offices, lunch rooms, break rooms, change rooms, sport facilities, automotive dealerships and schools.
- Cleans the air using multi-stage filtration process which includes pre-filter, HEPA-Rx filter, activated carbon filter, UV-C+ lamp and revitalizing negative ion chamber.
- The unit size is 12.4" x 35.2".
- One unit every 1,000 sq ft with two ACH (air changes per hour) or 700 sq ft with three ACH.



Dust



Germs





**EQUIPMENT
CONSTRUCTION
AND DESIGN**



**NATIONAL
SERVICE**



**EMERGENCY
SERVICE**



**PREVENTIVE
MAINTENANCE
PROGRAM**



**EQUIPMENT
INSTALLATION**



**ELECTRICAL
SERVICES**



**ENERGY
SAVING
SOLUTIONS**



Dispatch & Warehouse Locations Across Canada

Our local technicians can quickly respond to your requests, all while having the support and expertise from our other Canadian branches. Zoned dispatch locations across Canada allows for our technicians to reach your site faster during emergencies.

Our Mission is to:

- Improve emergency response times.
- Prevent prolonged downtime.
- Increase rates of first-time fixes.
- Have qualified in-house trained technicians.

Why Choose Northern Dock Systems



20 Years of Experience

Serving our customers with reliable services and dependable products since 2002. In the past 20 years we have worked with some of the largest companies in Canada.



Honesty & Integrity

We built our business on honesty and integrity to create long lasting relationships with not only our customers but with our employees.



KPI Tracking Getting the Job Done

We believe what gets measured gets done. So, we have systemized our KPIs (Key Performance Indicators) for quick responses and completion times.



Strong Communication

We believe that strong communication is key. With regular updates and work order reports, you can trust that your service call or project is in good hands.



First-Time Fixes

Our team of experienced technicians have fully-stocked trucks, tools and support for first-time fixes without any unnecessary expenses.



In-House Trained Technicians

All of our technicians are trained, mentored, supported and supervised by a team of experts in the dock and door industry.

We are proud to hold many safety certifications and memberships within North America.



Book a Service Call

1 (866) 601-1758 or service@northerndocksystems.com