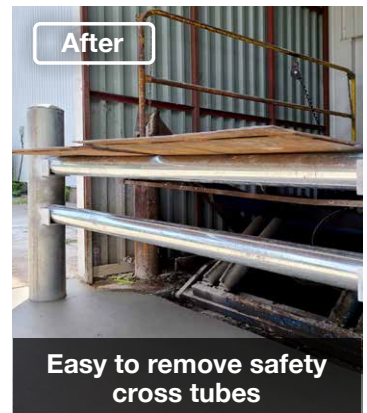
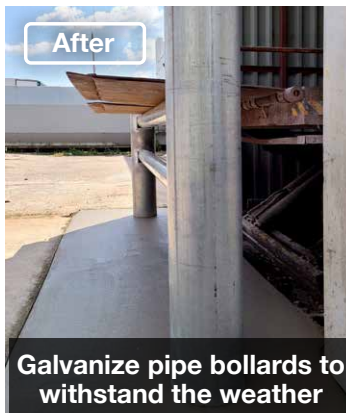
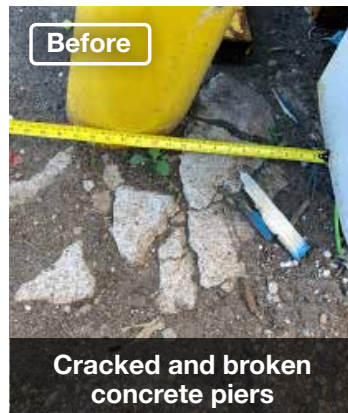




Embedded Structural Steel Docking Wall and Bollards

Local Grocery Store

London, ON



Project Overview

The store's existing bollard system, which protects the exterior-mounted lift table, was severely damaged. Absorbing the impact of countless delivery trucks over the years, left the bollards bent back. As a result, the bent bollards were impacting the walls of the enclosure installed around the lift table and the lift table itself.

In addition, the original concrete piers for the bollards were cracked. For these reasons, it was a difficult loading process with constant risk to the existing equipment and structure.

Northern Dock Systems, in collaboration with one of our trusted partners, was able to complete a full replacement of the existing bollards and install an upgraded docking wall.

All excavation, removal, fabrication, installation, reinforcing and finish concrete work was completed over a two-day period to reduce the service disruption for the grocery store.

This new bollard and structural wall solution will prove to be effective and reliable for countless years to come. We excavated 4' down into the ground along with extending the trenching and concrete from the face of the existing pit to 24" past the face of the bollards. As a result, the new system is sure to stop any reversing truck while maintaining strength and support as not to crack over time.

Furthermore, the galvanized pipe bollards and cross tubes are well suited for the exterior environment and weather. Additionally, with the cross tubes being removable, the store is

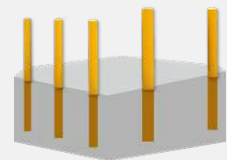
✓ Improve safety

✓ Workplace productivity

✓ Operational efficiency

Featured Products

Bollard System



Extracted the existing bollards
Installed new bollards
Finished the new exterior concrete apron



**EQUIPMENT
CONSTRUCTION
AND DESIGN**



**EQUIPMENT
INSTALLATION**