

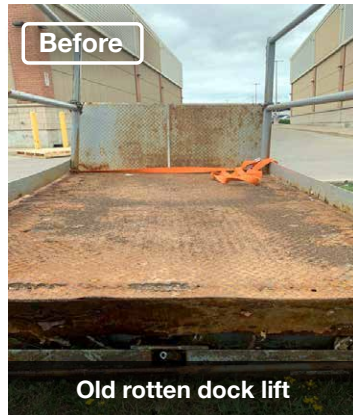


Dock Lift Table Replacement
Retail Store in Strip Mall

Bolton, ON

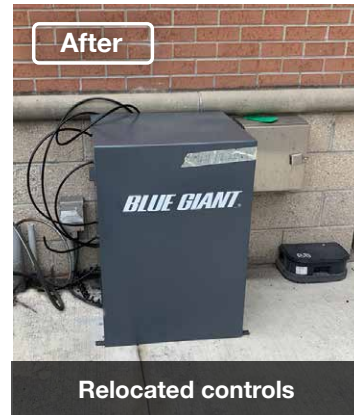


Before



Before

Old rotten dock lift



After

Relocated controls



After



After

Project Overview

This retail store in a strip mall in Bolton Ontario had an old dock lift table that rotted and rusted. As a result, the lift would constantly get stuck in the up position because of the corrosion. Therefore they had to make a service call to Northern Dock Systems to lower the lift stuck in the up position.

After inspecting the [dock table lift](#), our technicians determined that a new lift was needed because it was unsafe to operate. The side safety rails had rotted and were no longer safe. If anyone had leaned up against the rails, they could have collapsed. In addition, the split lip was cumbersome to lower onto a truck trailer and return the chain to the safety rail.

Our [Equipment Installation](#) and [Electrical Services](#) teams worked together to replace this rusted dock lift table with a new one. Originally the controls were in two separate rooms far away from the dock lift, making it unwieldy to use. So our electricians relocated the electrical and controls to make it easier to use.

In addition to an easier operation, the new dock lift table is much safer to operate. Staff members no longer have to manually lift and lower the lip, as this lift table has a lip assist spring to save their backs. Furthermore, the deck of the lift table has an anti-slip coating for additional safety. Staff members no longer have to worry about slips and falls from a slippery surface.

Overall the staff members at these retail stores in Bolton are happy because this new dock lift is easier and safer to use than the old rotting one.

- ✓ Improve safety
- ✓ Easy operation
- ✓ Workplace productivity
- ✓ Anti-slip

Featured Products

[Stationary Dock Lift](#)



- Completely sealed, weather-resistant cylinders vented back to hydraulic tank to prevent contaminant entry
- Easy to operate with deck-mount push button controls
- Versatile ground-level option when no loading dock is present



EQUIPMENT INSTALLATION



ELECTRICAL SERVICES