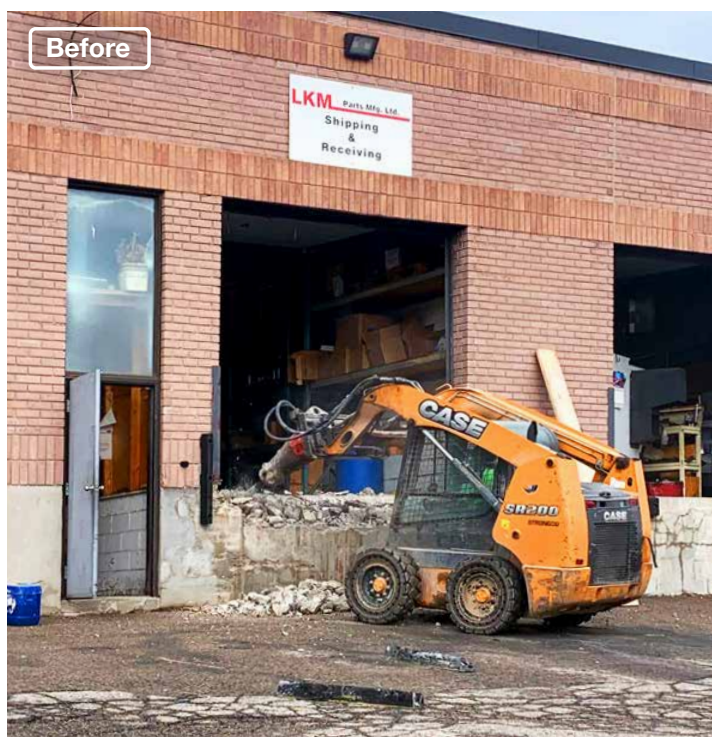


Pit Creation and Hydraulic Dock Leveler

LKM Parts Manufacturing

Aurora, ON



Project Overview

LKM Parts Manufacturing in Aurora had no loading dock and was using a dock board that was unsafe. In addition, it was causing a lot of unnecessary strain on the workers' backs to lift and place the dock board.

Northern Dock Systems excavated and poured new concrete for the new dock pit. Next, we installed a [Blue Giant hydraulic dock leveler](#) in the newly constructed dock pit. As a result, this hydraulic dock will make the loading dock much safer. Staff can easily operate the hydraulic dock with a push of a button, rather than risk injury by lifting a heavy dock board.

Furthermore, the fixed rear design allows the deck to flex up to 4" when under load to ensure full-width contact between the lip and the truck bed. Also, this rear hinge design provides a smooth transition for 3 or 4 wheel forklifts.

In addition, the NEMA4X push-button control station is moisture and corrosion-resistant, making it safe for this manufacturing plant.

Finally, we finished off this new dock with an [L-pad foam frame dock seal](#) to create a tight seal around the trailer for energy savings. Along with 4" [dock bumpers](#) to protect the new dock leveler and dock shelter.

- ✓ Improve safety
- ✓ Easy operation
- ✓ Workplace productivity
- ✓ Tight seal
- ✓ Energy saving
- ✓ Indoor comfort
- ✓ No white light
- ✓ Protect your equipment

Featured Products

[Hydraulic Dock Leveler \(Heavy\)](#)



[L-Pad Foam Frame Dock Shelters \(701\)](#)



**EQUIPMENT
INSTALLATION**



**ELECTRICAL
SERVICES**